

Micromass LCT Mass Spectrometer

Mass Spectrometer Operators: Moya McCarron and Jean Ellis.

Room B21, Donnan Laboratories Basement

Tel: 0151 794 3609

e-mail: moy@liv.ac.uk jmellis@liv.ac.uk

Sample Supplied By: N. FERRI Date Run: 2/2/16

Sample Reference: NF60 2PH2 S-Ac Sample Run By: MM

Log Book No: LCT/16/10088

Ionisation Mode: ES+ ☒ ES- ☐ APci+ ☐ APci- ☐

Sample Inlet: Syringe Pump ☒ Loop Inj ☐ HPLC ☐

Solvent: CH₃OH Concentration: —

Sample Cone Voltage: 25 Volts

Operator Comments :

[M+Na]⁺ @ 305Da

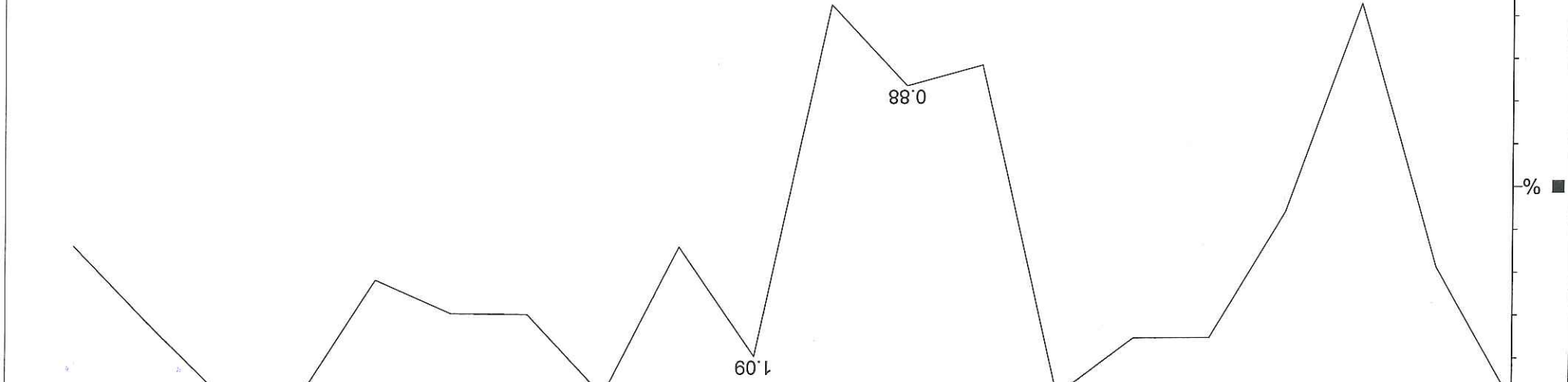
ACCMASS OK

Sample:- NF60 2PH2 5-Ac run in MeOH
 N. Ferri / SJH
 LCT (KC323)
 Operator: MM

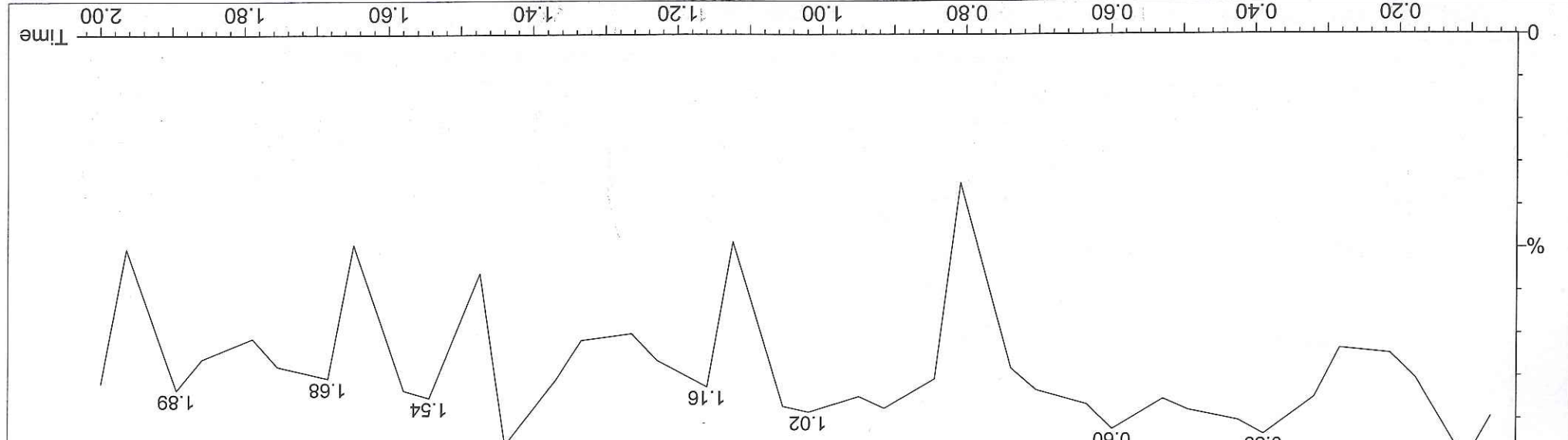
Chemistry Dept. Univ. of Liverpool

02-Feb-2016 15:22:39

1008P 100 0.04 0.67 1.09 1.30 1.82 1.63e3
 TIC
 2: TOF MS ES+



1008P 100 0.11 0.39 0.60 1.02 1.16 1.44 1.54 1.68 1.89 3.71e3
 TIC
 1: TOF MS ES+



Sample:- NF60 2PH2 5-Ac run in MeOH Cone = 25V

N. Ferri / SJH

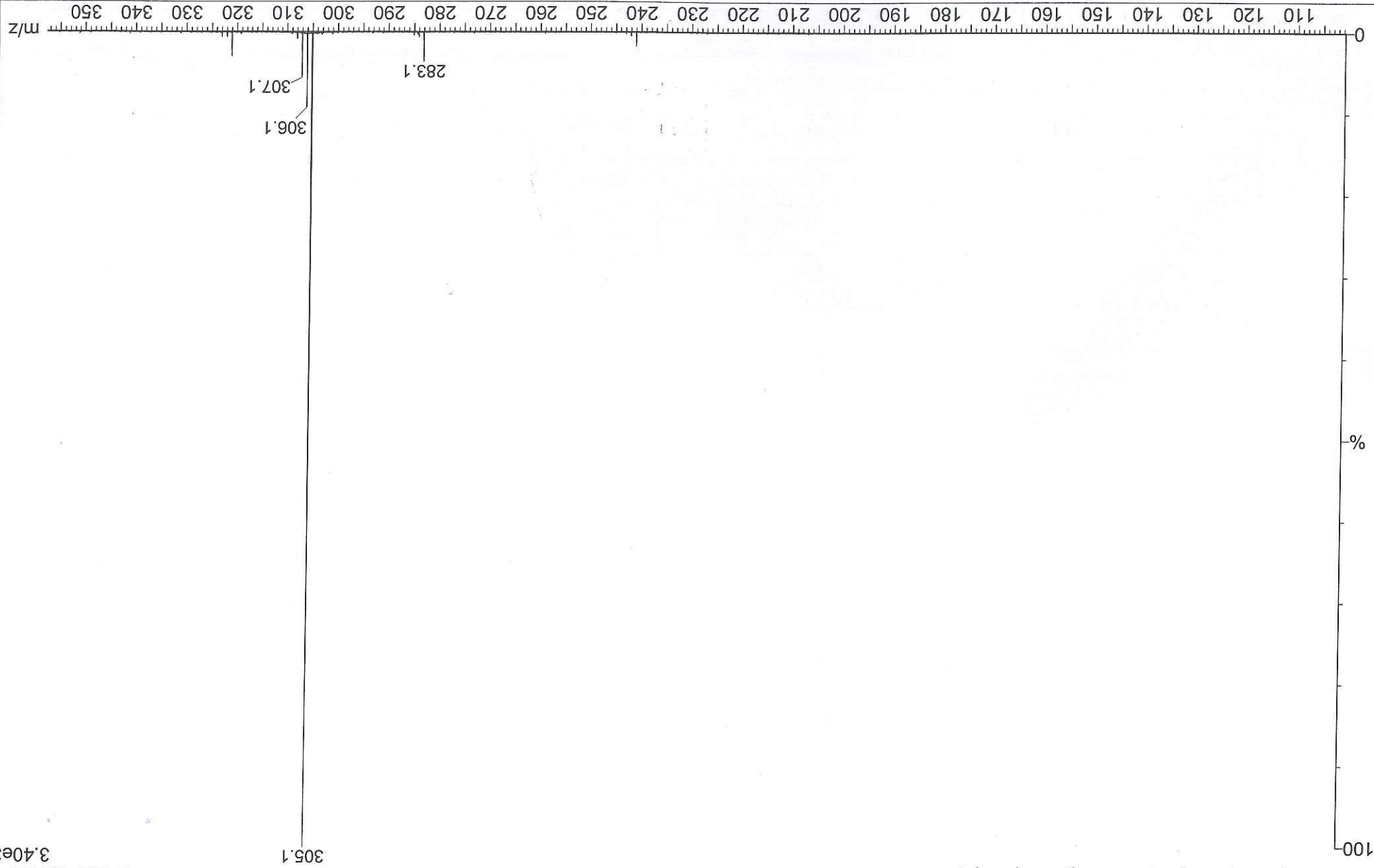
1008P 27 (1.438) Sm (SG, 10x2.00); Cm (5:35)

Operator: MM

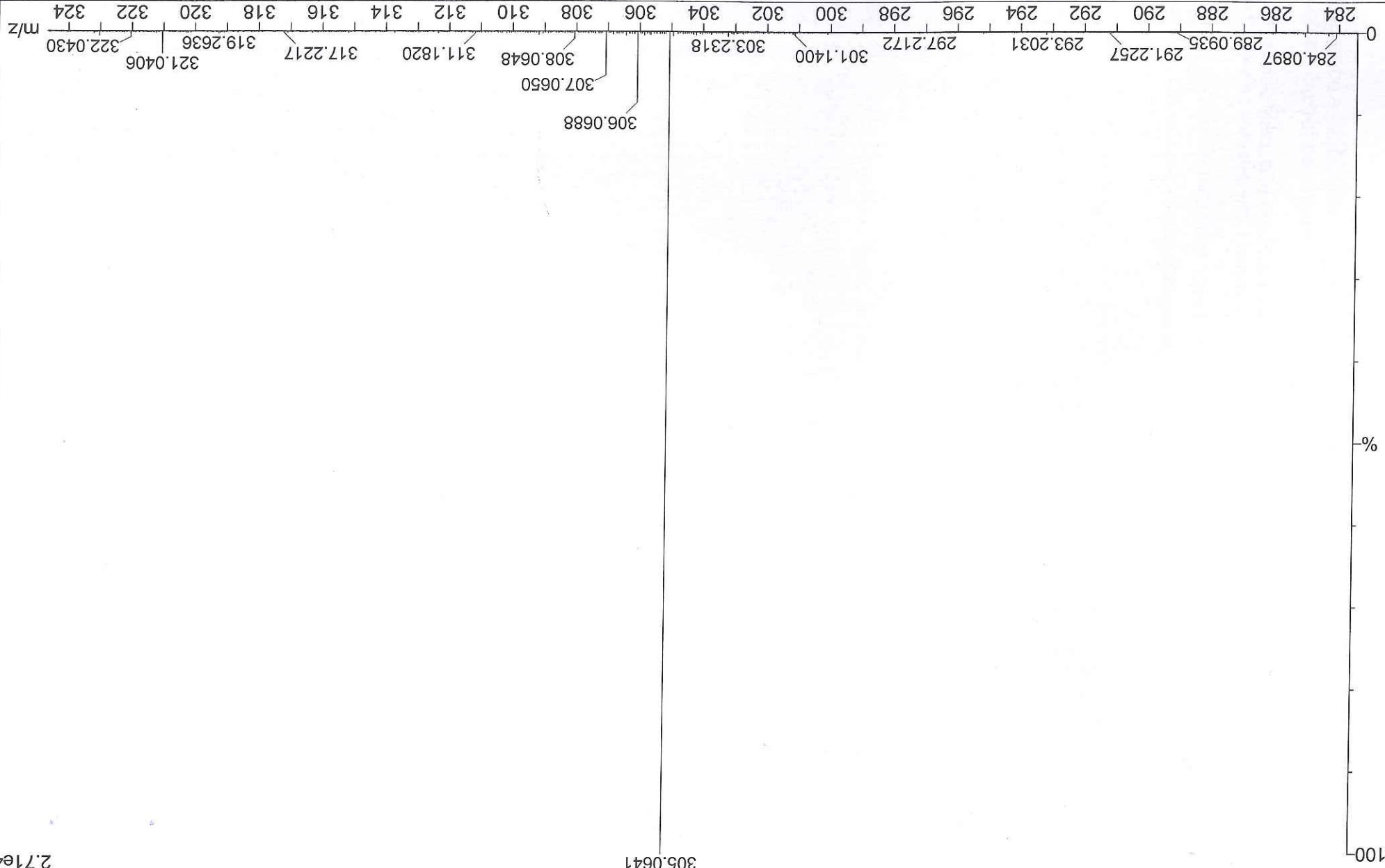
LCT 02-Feb-2016 15:22:39
Chemistry Dept. Univ. of Liverpool

1: TOF MS ES+

3.40e3

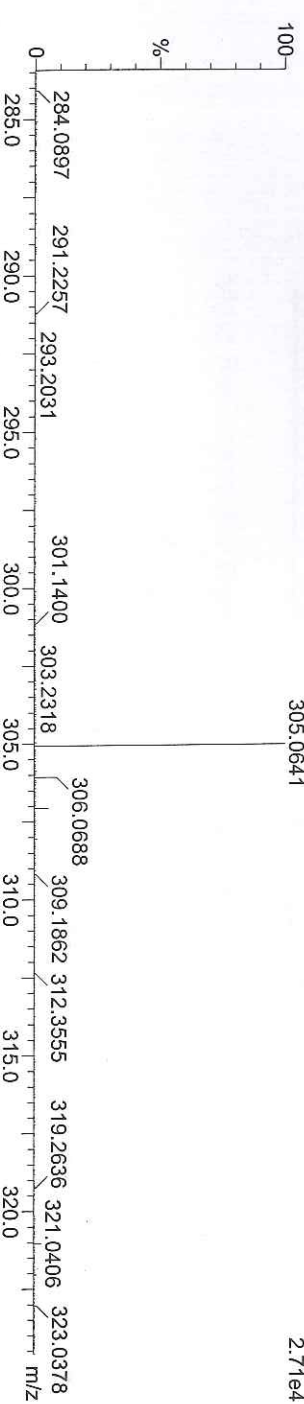


Sample:- NF60 2PH2 5-Ac run in MeOH Cone = 25V
N. Ferri / SJH
Operator: MM
 1008P 27 (1.438) AM (Cen,4, 80.00, Ar,5000.0,556.28,0.70,LS 30); Sm (SG, 10x2.00); Cm (5:35)
 305.0641
 LCT 02-Feb-2016 15:22:39
 Chemistry Dept. Univ. of Liverpool
 1: TOF MS ES+
 2.71e4



Monoisotopic Mass, Odd and Even Electron Ions
14 formula(e) evaluated with 1 results within limits (all results (up to 1000) for each mass)

LCT 02-Feb-2016 15:22:39
Chemistry Dept. Univ. of Liverpool
1: TOF MS ES+
2.71e4



Minimum:	30.00				-30.0				
Maximum:	100.00		4.0	20.0	200.0				
Mass	RA	Calc. Mass	mDa	PPM	DBE	Score	Formula		
305.0641	100.00	305.0646	-0.5	-1.6	5.5	1	C14 H18 O2	23Na	S2